



Company : Beach Petroleum Ltd

Well : PeeJay-1

Interval : 95.00 - 1922.09 meters

Created : 26/Nov/2008 7:10:14 AM



INTEQ

FORMATION EVALUATION LOG

DRILLING PARAM		MD meters	Oil Show P F G	LITHOLOGY %	CORE	TOTAL GAS					CHROMATOGRAPH					Calcmetry	Lithology Description
ROP (m/hr)						Total Gas (unit)					Methane ppm						
200	160	120	80	40		10	20	30	40	50	0.1	10000	0.1	10000			
WEIGHT ON BIT (klbf)											0.1	10000	0.1	10000			
	10	20	30	40	50						0.1	10000	0.1	10000			
											0.1	10000	0.1	10000			
											0.1	10000	0.1	10000			
											0.1	10000	0.1	10000			
											0.1	10000	0.1	10000			

		100															Spud PeeJay-1 @ 18:30 Hrs on 15/11/2008
		110															RT MSL: 34.15mMDRT Water Depth: 78.00mMDRT RT Seabed: 112.15mMDRT
		120															Drill 36" hole with seawater & Hi Vis sweeps Returns to Seabed 112.15m to 218m
		130															
		140															
		150															
		160															
		170															
		180															
		190															

RB1: 660mm (26") x 914mm
(36") H/Opener
Make: Reed
Type: Rock/YC11
Jets: 3x22, 1x16
Depth In: 112.15m
Depth Out: 218.0m
Drilled 105.85m in 3.9hrs
Grade: 1-1-NO-A-E-I-NO-TD



WOB: 1-10 klbf
RPM: 117-120
GPM: 953-954
SPP: 660-827 psi

Set 762mm (30") conductor at 216

NB2: 406mm (16")
Make: Hughes
Type: Rock/GX-1V
Jets: 3x20
Depth In: 218.0m
Depth Out: 810.0m
Drilled 892.0m in 11.6hrs
Grade: 1-1-NO-A-E-I-NO-TD

WOB: 1-10 klbf
RPM: 78-147
GPM: 600-1200
SPP: 495-2123 psi

200
210
220
230
240
250
260
270
280
290
300
310
320
330

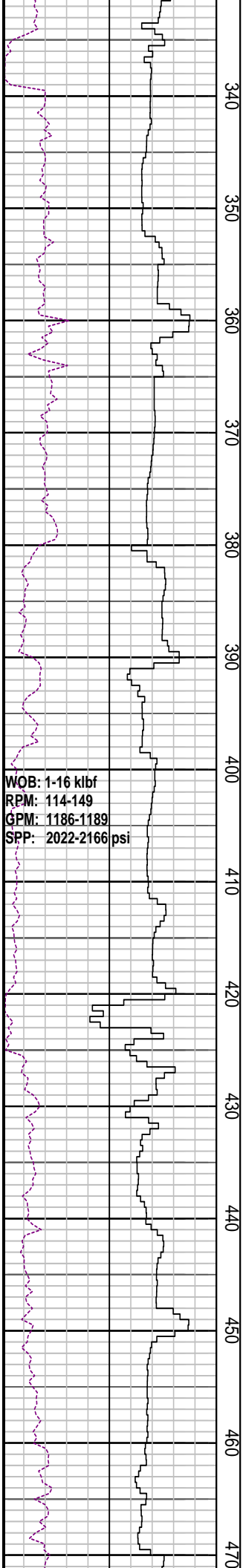
Drill 16" hole with seawater & Hi Vis sweeps
Returns to Seabed 218m to 810m

MD: 269.95, AZI: 150.86°
TVD: 264.9, Incl: 1.45°

MD: 294.47, AZI: 140.54°
TVD: 294.4, Incl: 1.15°

Returns to Seabed

MD: 323.97, AZI: 150.84°
TVD: 323.9, Incl: 1.06°

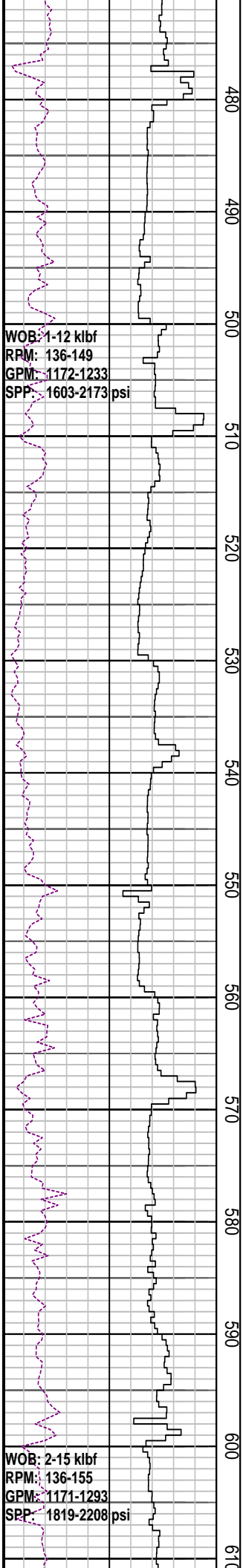


340
350
360
370
380
390
400
410
420
430
440
450
460
470

WOB: 1-16 kbf
RPM: 114-149
GPM: 1186-1189
SPP: 2022-2166 psi

Returns to Seabed

MD: 413.38, AZI: 197.79°
TVD: 413.3, Incl: 0.46°

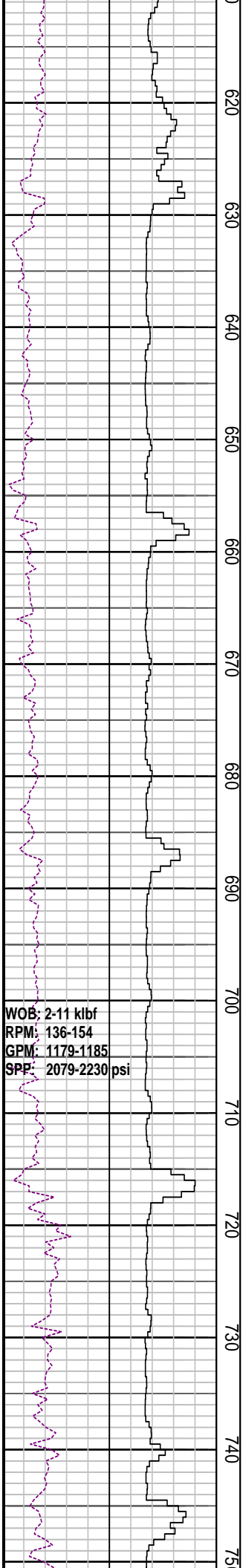


Returns to Seabed

MD: 502.18, AZI: 197.76°
TVD: 502.1, Incl: 0.23°

MD: 591.8, AZI: 226.93°
TVD: 591.7, Incl: 0.37°

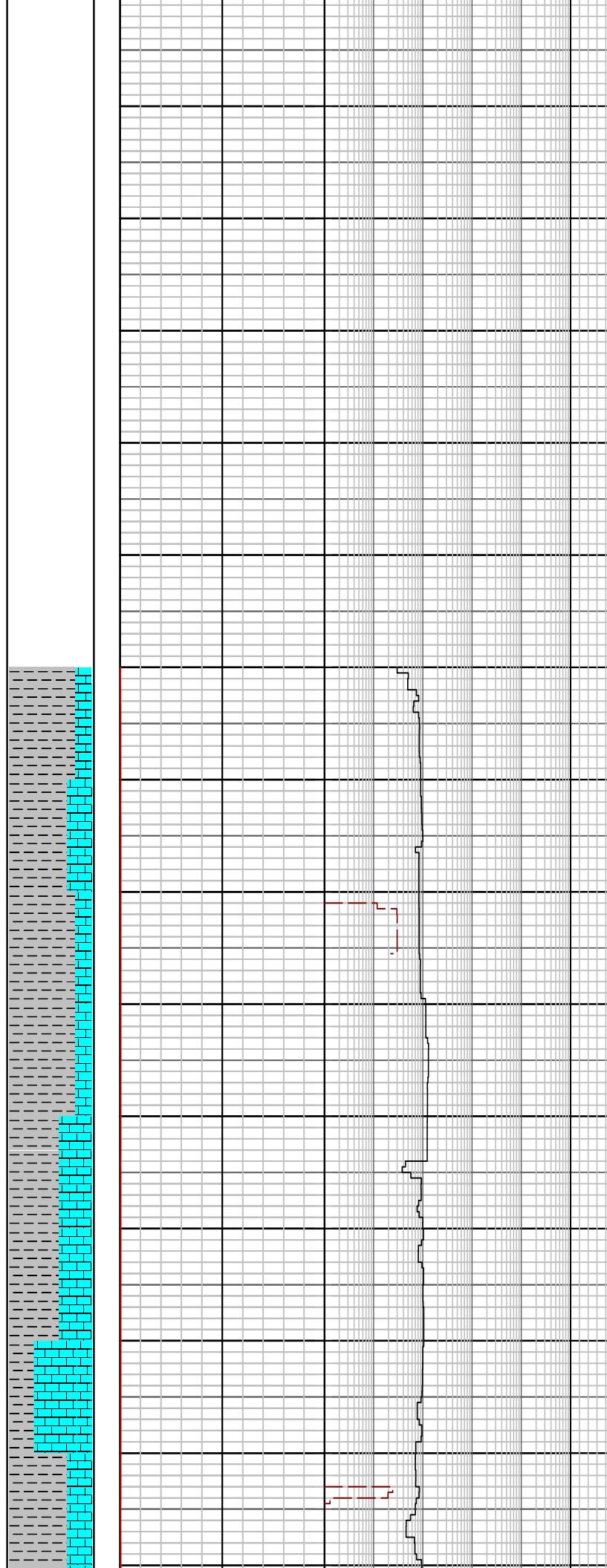
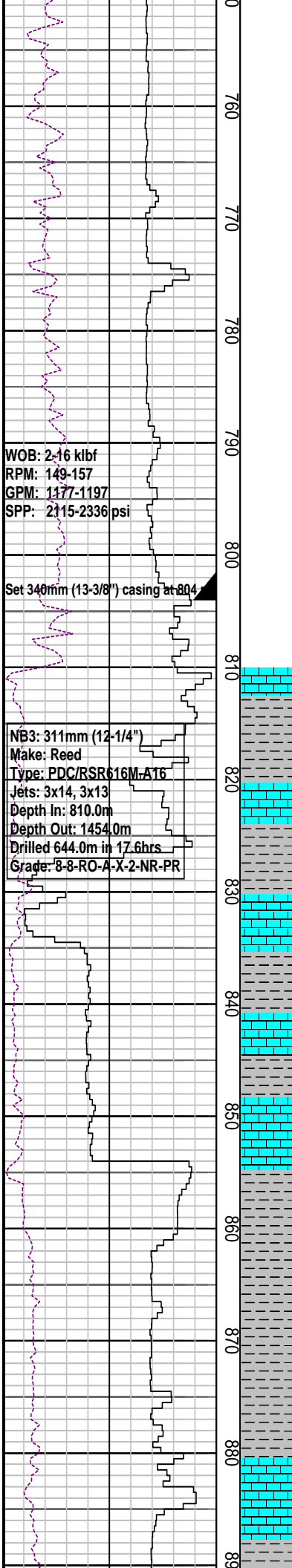
Returns to Seabed



WOB: 2-11 kbf
RPM: 136-154
GPM: 1179-1185
SPP: 2079-2230 psi

MD: 679.52, AZI: 321.43°
TVD: 679.5, Incl: 0.12°

Returns to Seabed



MD: 768.28, AZI: 271.31°
 TVD: 768.2, Incl: 0.20°

Returns to Seabed

MD: 803.99, AZI: 236.85°
 TVD: 803.9, Incl: 0.21°

LIMESTONE: Bio clear pale yel brn to lt brn gy, f to md, micr, com cor frag, com md to crs, wh calc, f por, n fluor

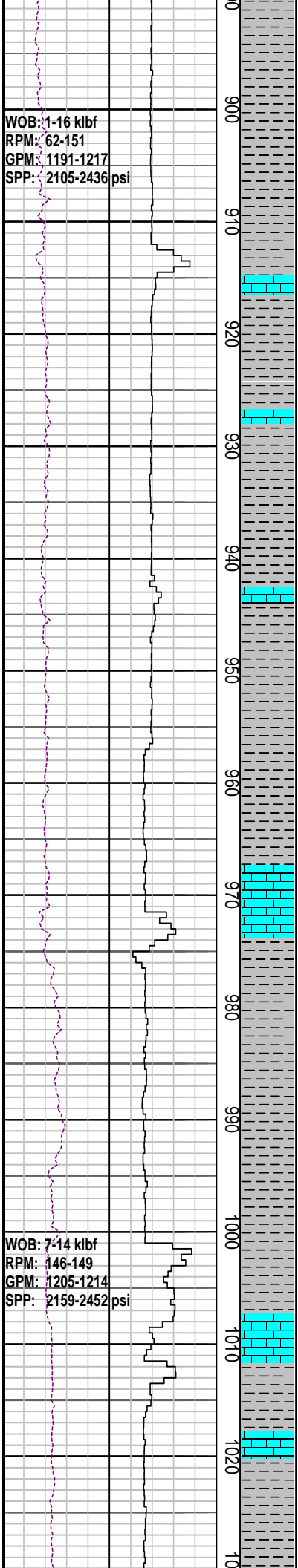
LOT @ 804m with 8.8 ppg
 EMW: 15.55 ppg @ 928 psi

CLAYSTONE: lt bl gy, mod sft, ang f sli slit, p srt, mod calc, Ls md mtrx, p vis por

MD: 842.85, AZI: 127.38°
 TVD: 842.8, Incl: 0.43°

CLAYSTONE: lt bl gy, mod sft, ang f sli slit, p srt, mod calc cmt, Ls md mtrx, p vis por, tr nod pyr

LIMESTONE: gn gry- med bl gry, frm-m, micr, com-med calc spar, tr foss frag, tr cor, p por, n fluor



CLAYSTONE: med lo-dk gn, mod sft frm, wl srt, tr pyr, tr foss

MW: 8.80 ppg FV:50
 PV : 17 YP:23
 Gels: 5/7/8
 CI : 37000

MD: 930.97, AZI: 102.94°
 TVD: 930.9, Incl: 0.44°

CLAYSTONE: med lo-dk gn, mod sft frm, stky, wl srt, tr foss

LIMESTONE: gn gry- med bl gry, frm-m, micr, com-med calc spar, tr foss frag, tr cor, p por, n fluor

CLAYSTONE: med lo-dk gn, mod sft frm, wl srt, tr pyr, tr foss, tr sst

CLAYSTONE: med lo-dk gn, mod sft frm, wl srt, tr pyr, tr foss

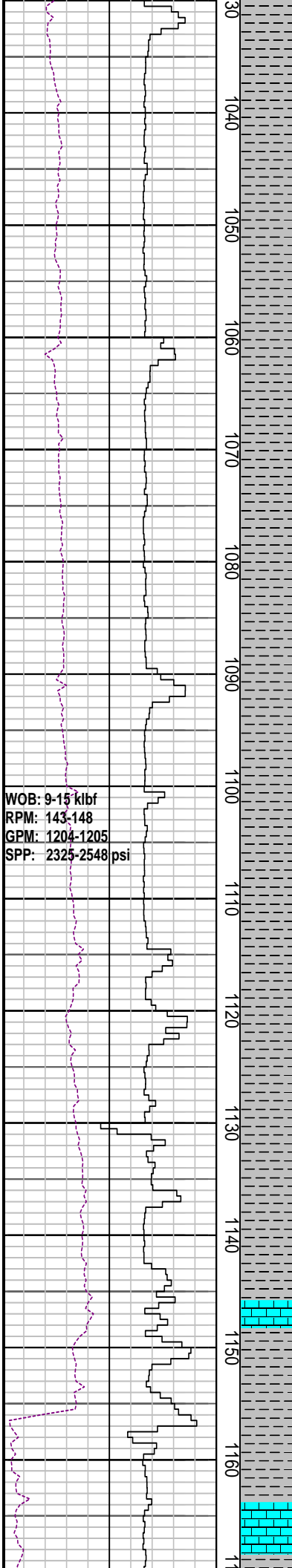
LIMESTONE: gn gry- med bl gry, frm-m, micr, com-med calc spar, tr foss frag, tr cor, p por, n fluor

CLAYSTONE: med lo-dk gn, mod sft frm, wl srt, tr pyr, tr foss, tr glau

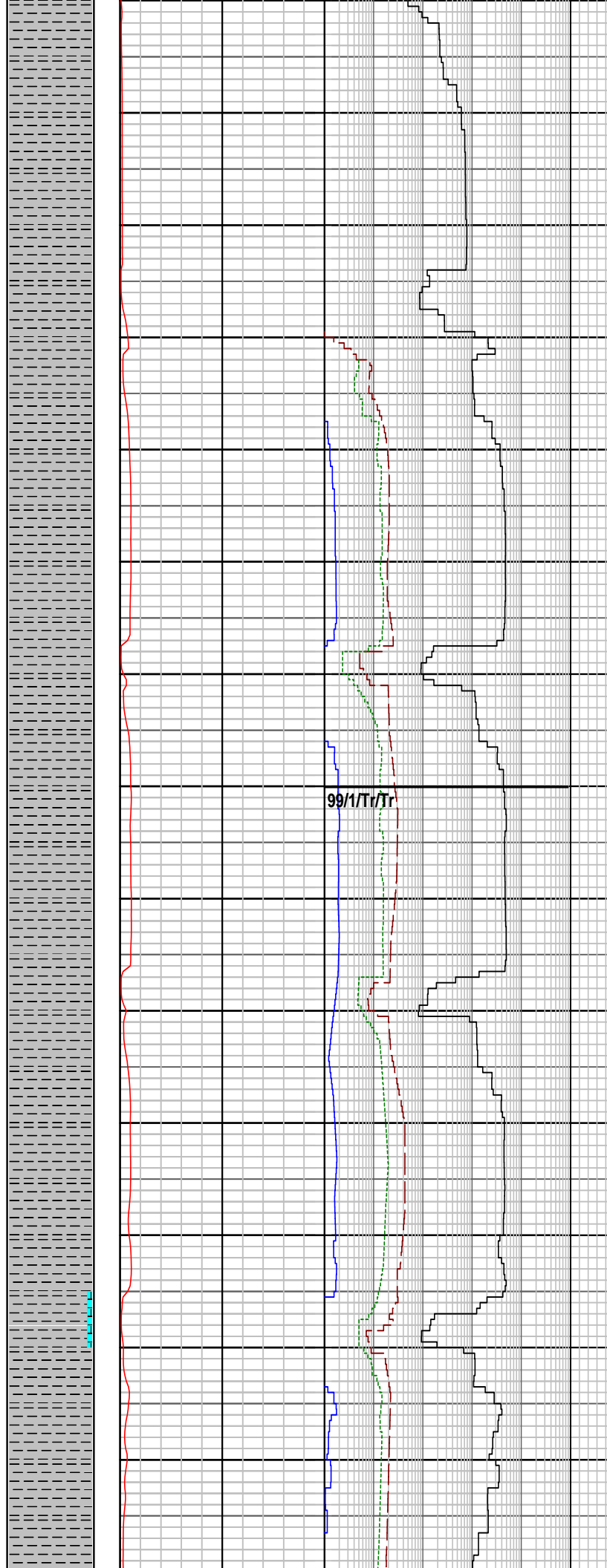
MD: 1019.59, AZI: 112.01°
 TVD: 1019.5, Incl: 0.43°

100/0

100/0



30
1040
1050
1060
1070
1080
1090
1100
1110
1120
1130
1140
1150
1160
1170



CLAYSTONE: med lo-dk gn, mod sft-frm,
 wl srt, tr pyr, tr foss, tr sst

LIMESTONE: gn gry- med bl gry, frm-m,
 micr, com-med calc spar, tr foss frag, tr
 cor, p por, n fluor

MD: 1048.56, AZI: 126.08°
 TVD: 1048.5, Incl: 0.33°

CLAYSTONE: med lo-dk gn, mod sft-frm,
 wl srt, tr foss

CLAYSTONE: med lo-dk gn, mod sft-frm,
 wl srt, tr pyr, tr foss, tr sst

LIMESTONE: gn gry- med bl gry, frm-m,
 micr, com-med calc spar, tr foss frag, tr
 cor, p por, n fluor

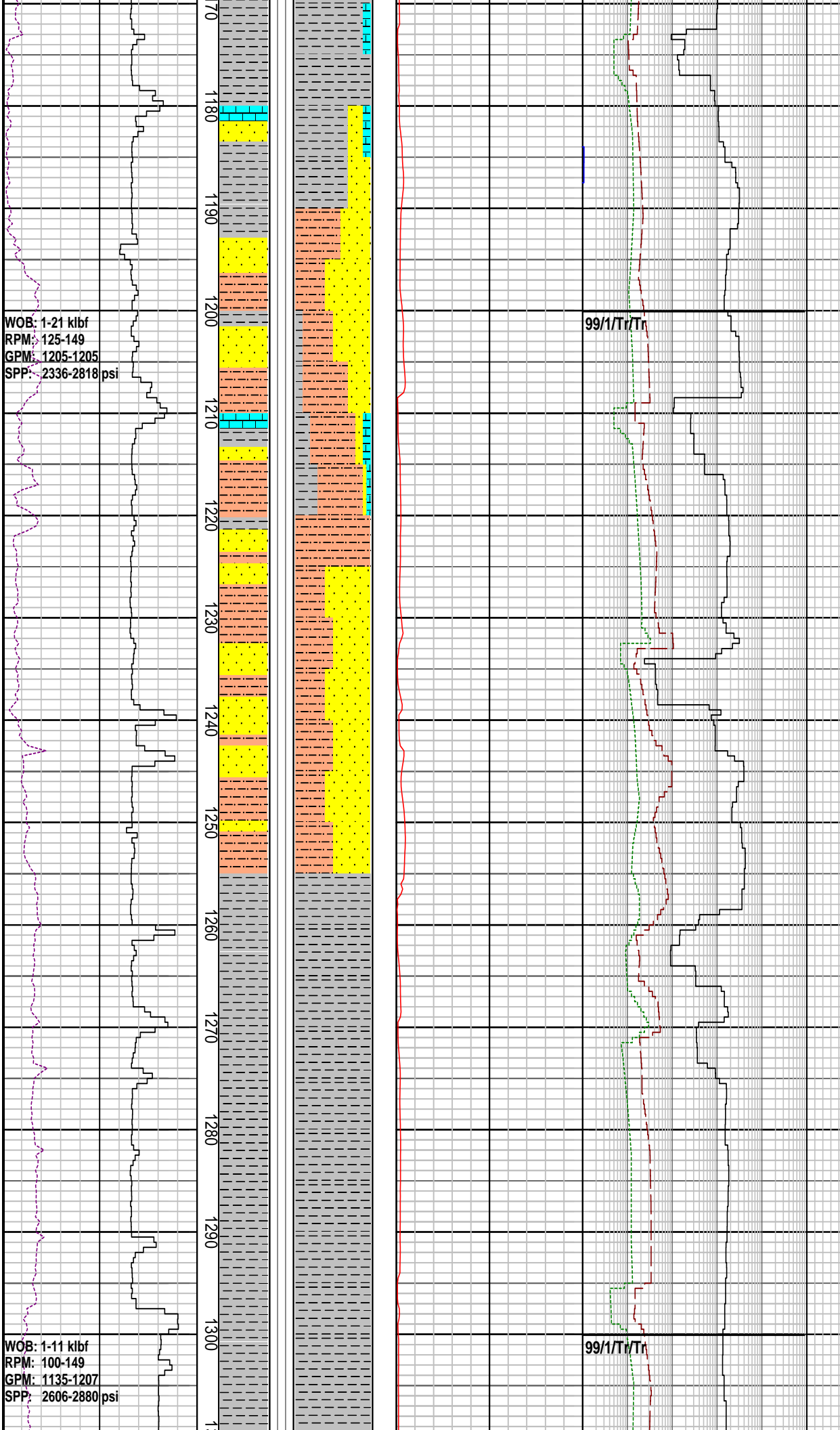
CLAYSTONE: olv gy- bn gy, sft-frm mod
 hd ip, sbbiky-blky, tr pyr, tr v f carb mat,
 tr glau, tr cor

MD: 1108.49, AZI: 130.22°
 TVD: 1108.4, Incl: 0.33°

CLAYSTONE: olv gy- bn gy, sft-frm mod
 hd ip, sbbiky-blky, tr pyr, tr v f carb mat,
 tr glau, tr cor

LIMESTONE: gn gry- med bl gry, frm-m,
 micr, com-med calc spar, tr foss frag, tr
 cor, p por, n fluor

CLAYSTONE: olv gy- bn gy, sft-frm mod
 hd ip, sbbiky-blky, tr pyr, tr v f carb mat,
 tr glau, tr cor, tr cht



CLAYSTONE : brn blk- olv blk, sft-frm mod hd ip, sbblky-blky, tr pyr, tr v f carb mat , tr cht

MD: 1167.38, AZI: 121.98°
TVD: 1167.3, Incl: 0.22°

SANDSTONE : brn gy, trnsp-trnsl qtz gr, tr yel brn, stn dom f, md-crs, mod-wl srt, sbang-wl rndd, n vis cmt, mnr arg slit mtrx, fr inferred por

SILTSTONE: ol gy-md dk gy, v sli calc, r nod pyr, sbblky grd to pyr

CLAYSTONE: brn gy-brn blk, sft-frm mod hd ip, sbblky-blky, tr pyr, tr v f carb mat , tr cht, tr sd

MW: 9.5 ppg	FV:65
PV : 19	YP:32
Gels: 7/9/11	
Cl : 35000	

CLAYSTONE: brn gy-brn blk, sft-frm mod hd ip, sbblky-blky, tr v f carb mat , tr cht, tr foss frag, tr sd

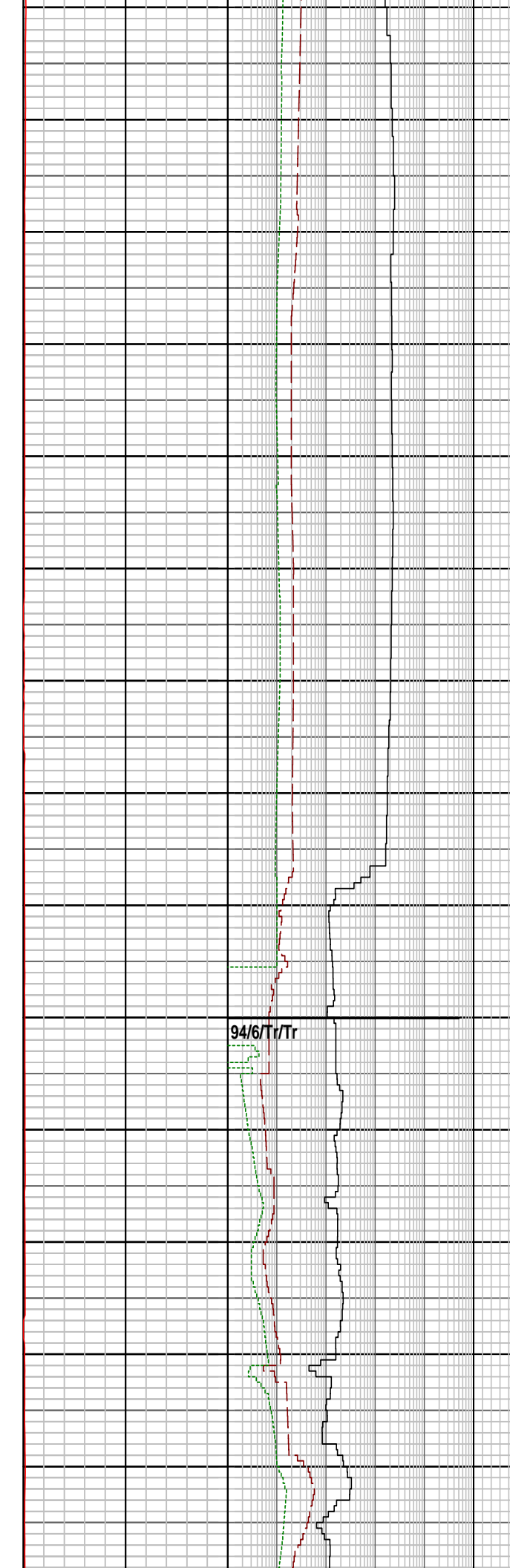
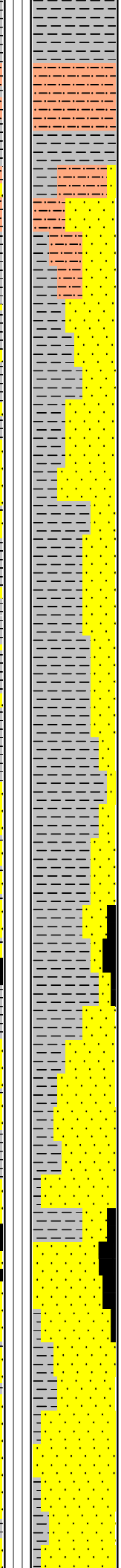
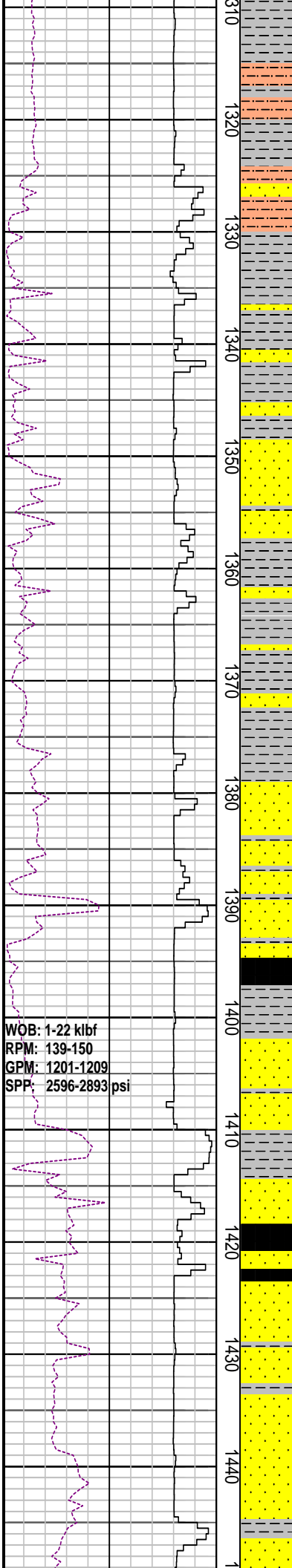
SANDSTONE : brn gy, trnsp-trnsl qtz gr, tr yel brn, stn dom f, md-crs, mod-wl srt, sbang-wl rndd, n vis cmt, mnr arg slit mtrx, fr inferred por

CLAYSTONE: md dk gy-dk gy, v sli calc, mnr com pyr, sli slit, sft-plas sbblky

SANDSTONE : brn gy, trnsp-trnsl qtz gr, tr yel brn, stn dom f, md-crs, mod-wl srt, sbang-wl rndd, n vis cmt, mnr arg slit mtrx, fr inferred por

MD: 1285.81, AZI: 61.10°
TVD: 1285.8, Incl: 0.69°

CLAYSTONE: md dk gy-dk gy, v sli calc, mnr com pyr, sli slit, sft-plas sbblky



SILTSTONE: md dk gy-dk gy, v sli calc, tr pyr, arg in pt, grd to Clst, sft to frm, tr plas, dom sbblyk

CLAYSTONE: brn gy, sli calc, sft pyr, amor

SANDSTONE : lt ol gy, trnsp-trnsl qtz gr, dom wl srt, sbang-wl rndd, wk calc cmt, mnr fri agg, tr nod pyr, fr inferred por

MD: 1345.01, AZI: 106.82°
 TVD: 1345, Incl: 0.68°

CLAYSTONE: brn gy to ol blk, sli calc, v f qtz, amor, sli dispersive mass

MD: 1374.54, AZI: 110.27°
 TVD: 1374.5, Incl: 0.67°

SANDSTONE : lt ol gy, trnsp-trnsl qtz gr, dom wl srt, sbang-wl rndd, wk calc cmt, mnr fri agg, tr nod pyr, fr inferred por

COAL: dk brn blk, mod sft-hd, ang planar, conch-frac

SANDSTONE: qtz, clr-trnsl, md gy in pt, f-pred crs to v crs, ang to subrnnd, p srt, wk calc cmt, loc com arg mtrx, abd v crs mky qtz, tr Fe stn qtz, fri to pred disaggregated fr-g

COAL: dk brn blk, mod sft-hd, ang planar, conch-frac

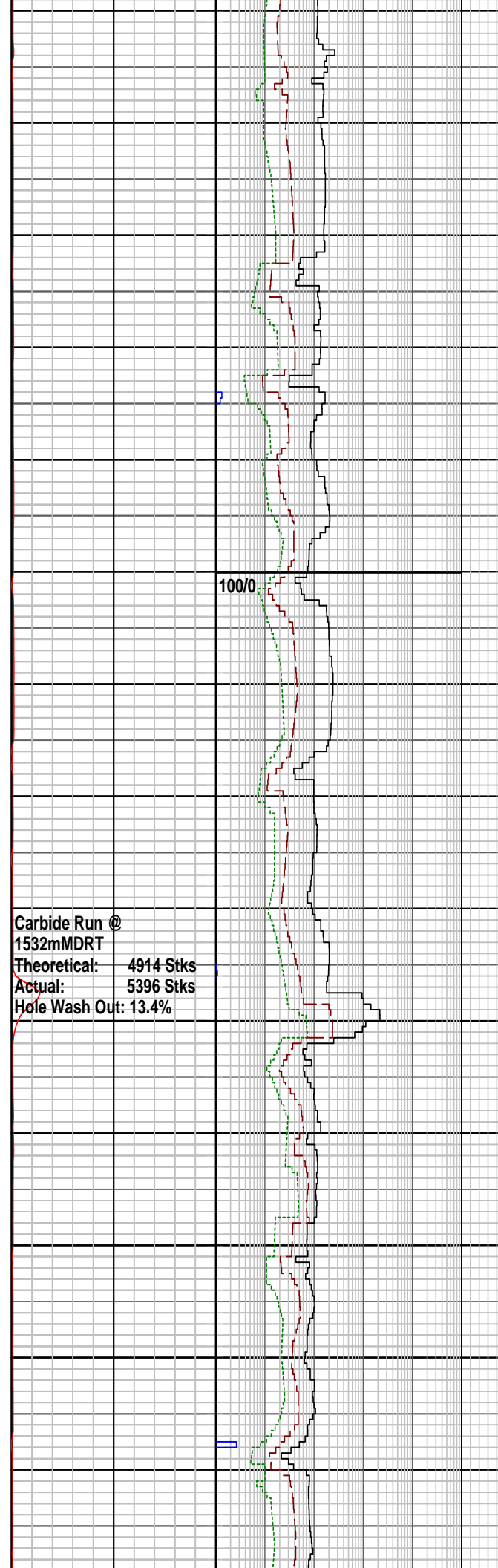
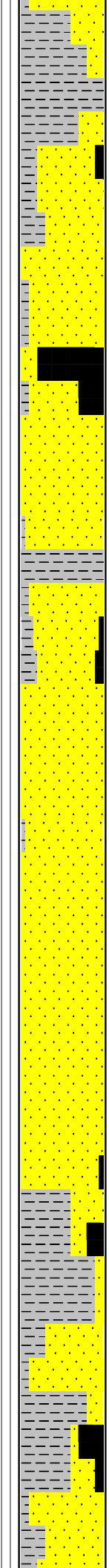
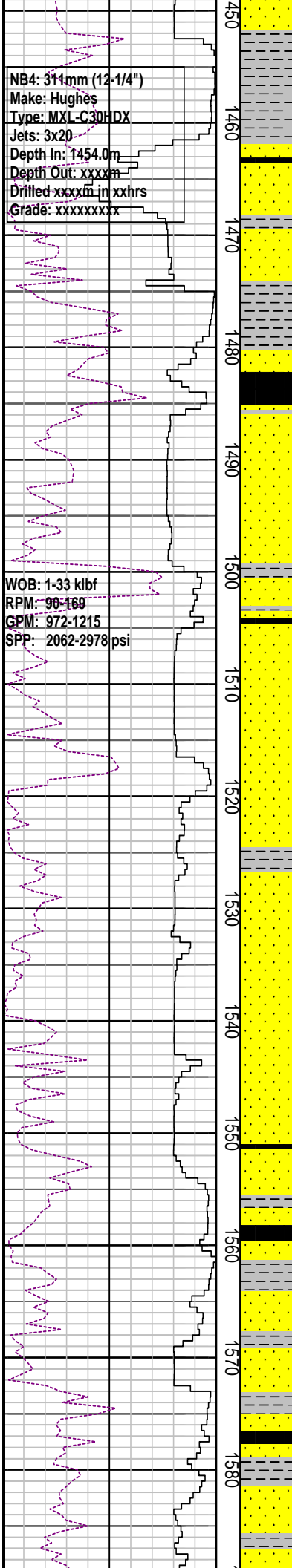
SANDSTONE: mky qtz, clr-trnsl, md gy in pt, f-crs, ang to subrnnd, p srt, wk calc cmt, com arg mtrx, fr-gd por, n fluor

MD: 1433.56, AZI: 132.78°
 TVD: 1433.5, Incl: 0.69°

SANDSTONE: qtz, clr-trnsl, lt gy in pt, f-pred crs- v crs, ang to subrnnd, p srt, wk

NB4: 311mm (12-1/4")
 Make: Hughes
 Type: MXL-C30HDX
 Jets: 3x20
 Depth In: 1454.0m
 Depth Out: xxxxm
 Drilled xxxxm in xxhrs
 Grade: xxxxxxxx

WOB: 1-33 klbf
 RPM: 90-169
 GPM: 972-1215
 SPP: 2062-2978 psi



Carbide Run @
 1532mMDRT
 Theoretical: 4914 Stks
 Actual: 5396 Stks
 Hole Wash Out: 13.4%

calc cmt, pred cln, com crs mky qtz, t musc, tr coral deb, tr nod pyr, disaggregated fr-gd

CLAYSTONE: It brn-lt yel gy, sft frm ip, mass-amor occ blkly, tr carb mat, tr foss frag

COAL: dk brn blk, mod sft-hd, ang planar, conch-frac

SANDSTONE: qtz, clr-trnsl, lt gy in pt, f-pred crs - v crs, ang to subrndd, p srt, wk calc cmt, pred cln, com crs mky qtz, tr musc, gd por, no fluor

MD: 1492.77, AZI: 331.27°
TVD: 1492.7, Incl: 0.31°

CLAYSTONE : md brn gy to ol gy, sii calc in pt, loc sli slt, tr carb spks, occ lit frag, frm, blkly in pt

SANDSTONE: qtz, clr-trnsl, lt gy in pt, f-pred f-crs, ang to subrndd, p srt, wk calc cmt, pred cln, com crs mky qtz, tr musc, gd por, nod pyr, no fluor

MD: 1552.04, AZI: 350.47°
TVD: 1552.0, Incl: 0.35°

COAL: dk blk, brit, hd, ang planar, conch-frac, tr qtz sand

CLAYSTONE: yel gy to lt brn gy, md lt gy, sii calc, sii slt, dom dispersive

SANDSTONE: qtz, clr to transl, f to gran, ang to sbrnrd, v p srt, cln, tr qtz overgrowths, tr smky qtz, disaggreg, gd por, n fluo

COAL: dk blk, brit, hd, ang planar, conch-frac, tr qtz sand

WOB: 1-37 klbf
RPM: 102-142
GPM: 683-1818
SPP: 2230-2978 psi

WOB: 1-34 klbf
RPM: 87-155
GPM: 919-1221
SPP: 2005-3119 psi

1590
1600
1610
1620
1630
1640
1650
1660
1670
1680
1690
1700
1710
1720

100/Tt

86/9/4/Tt

COAL: dk blk, brit, hd, ang planar, conch-frac, tr qtz sand

SANDSTONE: qtz, clr to transl, f to gran, ang to sbrndd, v p srt, cln, tr qtz overgrowths, tr smky qtz, disaggreg, gd por, tr yel min fluor

FLUORESCENCE(1615): tr p.p. mod bri yel fluor, v slw mky stmg cut, n res ring

COAL: dk blk, brit, hd, ang planar, conch-frac, tr qtz sand

CLAYSTONE: yel gy to lt brn gy, md lt gy, sli calc, grd to Sltst

FLUORESCENCE(1634): 5% p.p. dull yel fluor, v slw mky stmg cut, n res ring

FLUORESCENCE(1639): 80% p.p. dull yel fluor, v slw mky stmg cut, n res ring

MD: 1640.51, AZI: 28.44°
TVD: 1640.4, Incl: 0.45°

SANDSTONE: qtz, clr to transl, f to gran, ang to sbrndd, v p srt, cln, tr qtz overgrowths, tr smky qtz, disaggreg, gd por, 80% brt yel fluor, stmg cut fluor

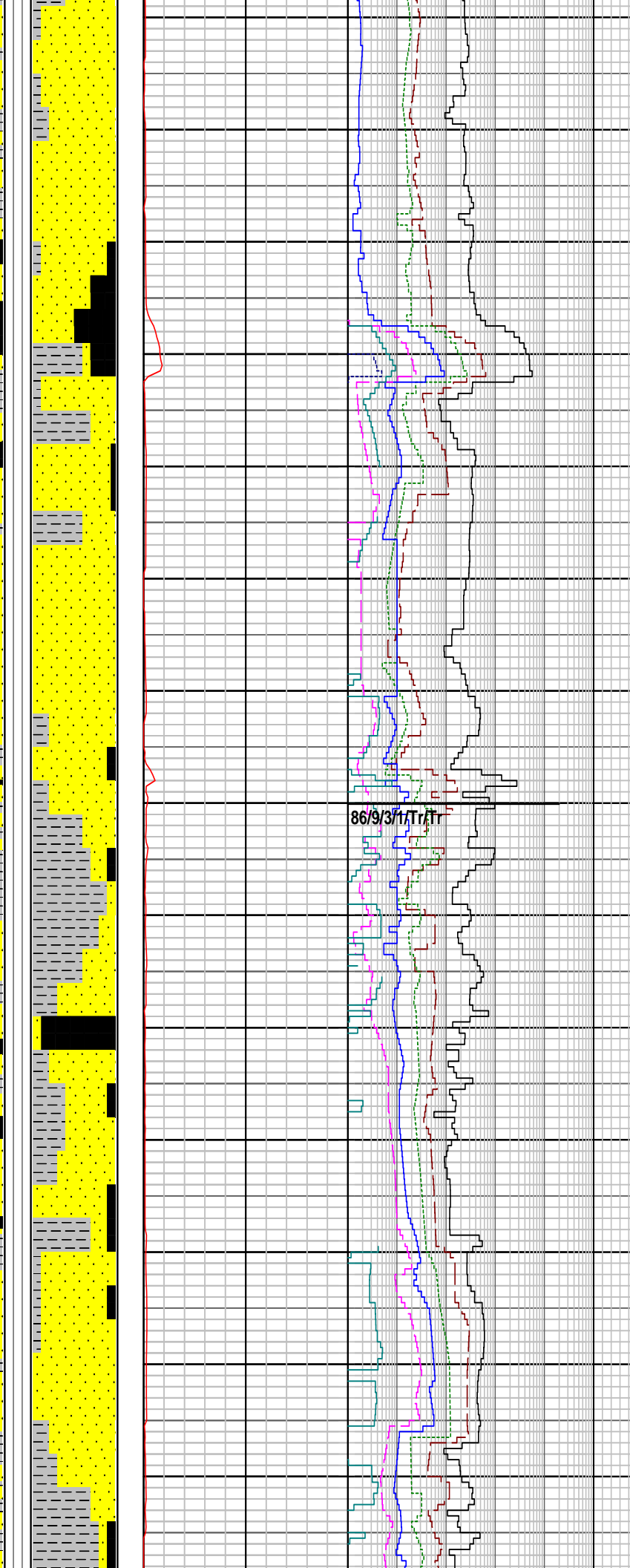
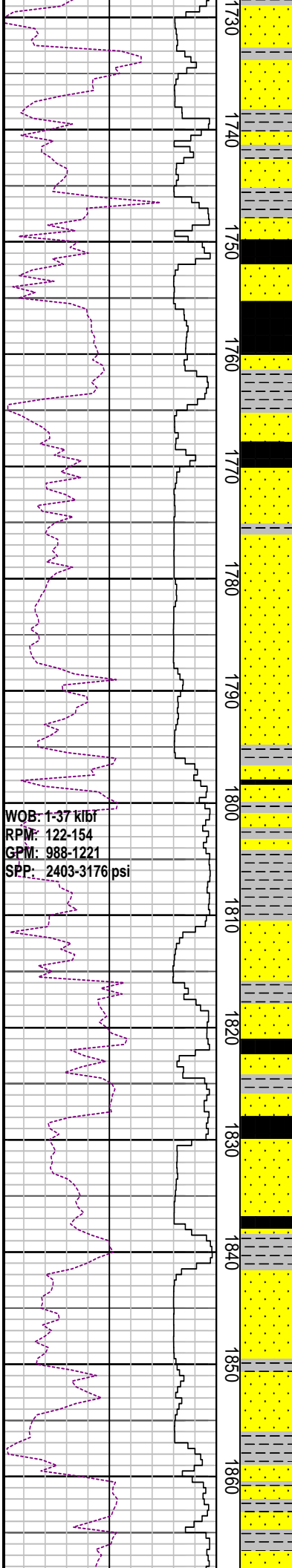
CLAYSTONE: brn gy to ol gy, sli calc, grd to Sltst

SANDSTONE: qtz, clr to transl, f to gran, ang to sbrndd, v p srt, cln, tr kao incl, tr smky qtz, disaggreg, gd por, 60% brt yel fluor, stmg cut fluor

CLAYSTONE: brn blk-ol gy, sli calc, tr carb spks, sub blkly-blky

COAL: dk brn blk, mod sft-hd, ang planar, conch-frac

CLAYSTONE: brn blk-ol gy, sli calc, tr carb spks, sub blkly-blky



MD: 1729.6, AZI: 18.32°
 TVD: 1729.5, Incl: 0.55°

SANDSTONE: qtz, clr to transl, f to gran, ang to sbrndd, v p srt, cln, tr qtz overgrowths, tr smky qtz, disaggreg, gd por, n fluo

COAL: dk blk, brit, hd, ang planar, conch-frac

CLAYSTONE: brn blk-ol gy, sli calc, tr carb spks, sub blk-ylky

SANDSTONE: qtz, clr to transl, f to gran, ang to sbrndd, v p srt, cln, tr smky qtz

MD: 1788.72, AZI: 29.31°
 TVD: 1788.6, Incl: 0.69°

86/9/31/Tr/Tr

CLAYSTONE: yel brn, bl gy in pt, sli calc, loc v slit, tr carb spks, occ foss frag, dom sft amor

MD: 1818.45, AZI: 33.65°
 TVD: 1818.4, Incl: 0.58°

COAL: dk blk, subbituminous, brit, hd, ang planar, conch-frac

COAL: dk blk, subbituminous, brit, hd, ang planar, conch-frac

SANDSTONE: qtz, clr to transl, f to gran, ang to sbrndd, v p srt, cln, tr kao incl, tr musc, disaggreg, gd por

CLAYSTONE: yel brn, bl gy in pt, sli calc, loc v slit, tr carb spks, occ foss frag, dom sft amor

